

PHYLUM

# ARTHROPODA

## 5 SUBPHYLA:

SUBPHYLA Trilobitmorpha

SUBPHYLA Crustacea

SUBPHYLA Chelicerata

SUBPHYLA Myriapoda (not on Midterm)

SUBPHYLA Hexapoda (not on Midterm)

SUBPHYLUM

# Trilobitomorpha



Trilobites are the most diverse group of extinct animals preserved in the fossil record.

PHYLUM

# ARTHROPODA

SUBPHYLUM Crustacea

**5 CLASSES:** (BOCCM)

CLASS Branchiopoda

CLASS Ostracoda

CLASS Copepoda

CLASS Cirripedia

CLASS Malacostraca

# Subphylum Crustacea

...to recap

-Class Malacostraca

SAID "....."

- » Order Stomatopoda Krill
- » Order Amphipoda Beach hoppers
- » Order Isopoda **Roly Poly** & Sea Roach
- » Order Decapoda Crab & Lobster

Do not need to know Orders, .....just that Roly polies are related to crabs

# Crustacea

Class  
**Branchiopoda**

“Lung feet”

Fairy Shrimp/Sea Monkeys

Cladocerans = Water fleas



Class **Copepoda**

Fairy Shrimp



Class **Ostracoda**

Seed Shrimp



Class **Cirripedia**

Acorn & Stalked  
Barnacles

Class **Malacostraca**



**Largest class**  
**4 ORDERS**

**Stomatopoda**  
=Mantis Shrimp

**Isopoda**

Roly polies & Giant Sea  
Roach

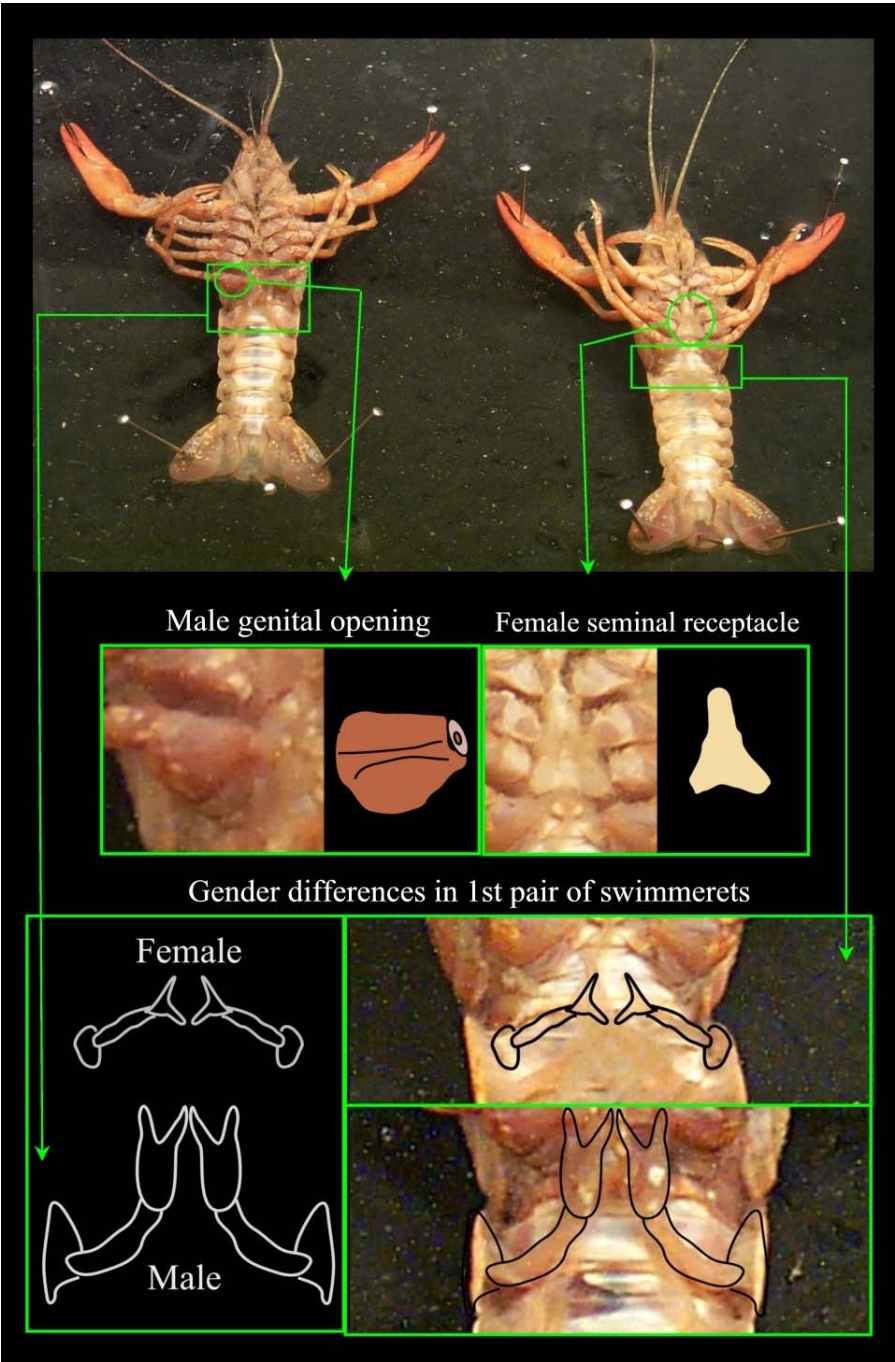
**Amphipoda**

Beach Hoppersnd Fleas

**Decapoda**

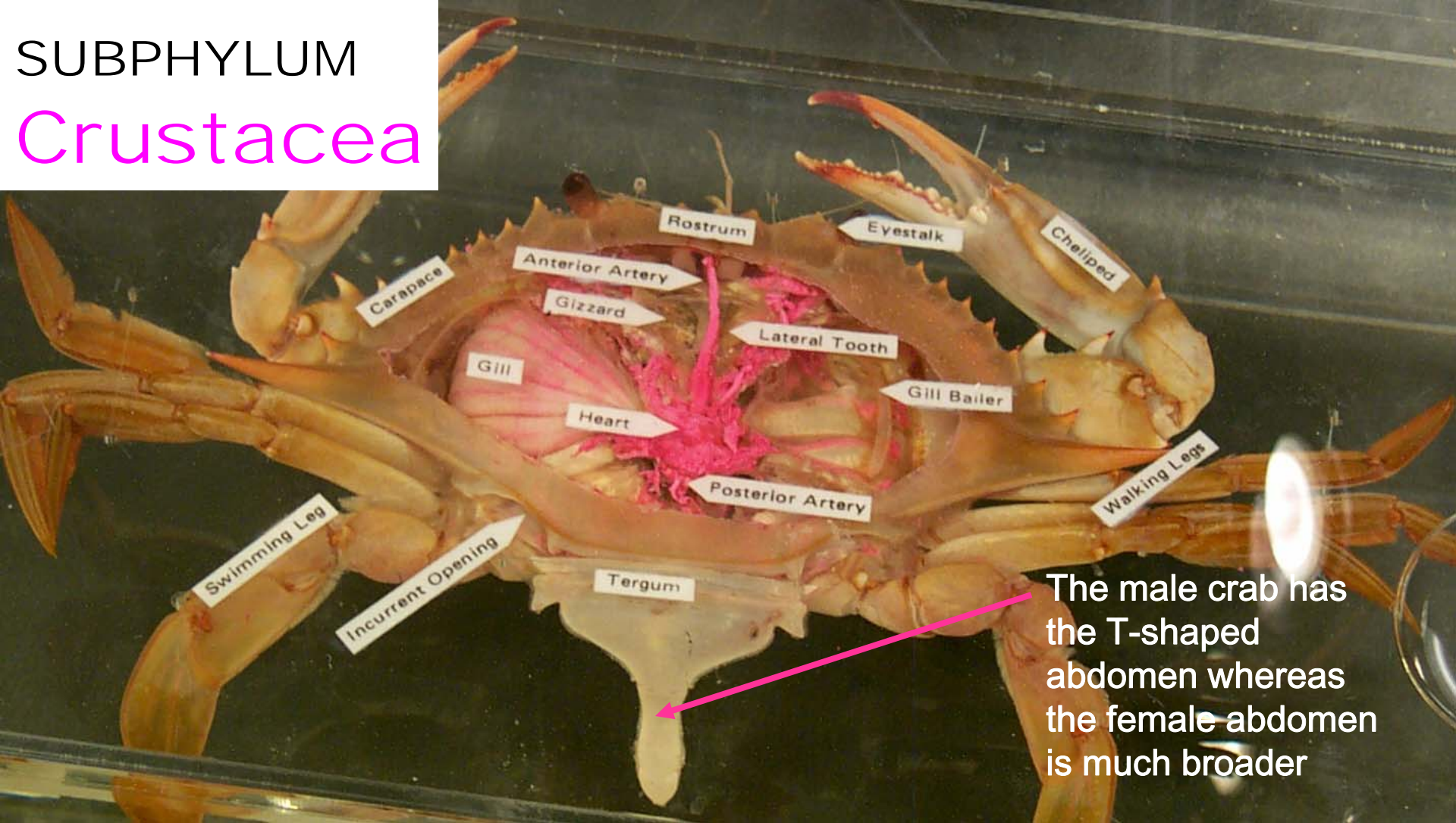
Crabs, Lobsters etc

Can you remember how to tell a male from a female crayfish?



1st pleopod is reduced or absent in females

# SUBPHYLUM Crustacea



Any dissected crab in the lab will not be stained like this but you should be familiar with the structures.....

PHYLUM

# ARTHROPODA

SUBPHYLUM Chelicerata

**3 CLASSES:**

CLASS **Arachnida** (Spiders & scorpions)

CLASS **Merostomata** (Horsehoe crabs)

CLASS **Pycnogonida** (Sea spiders)





Arachnida

Acarina



SUBPHYLUM  
Chelicerata



Merostomata



Arachnida

Araneae

# TAGMOSIS

Book lungs & trachea

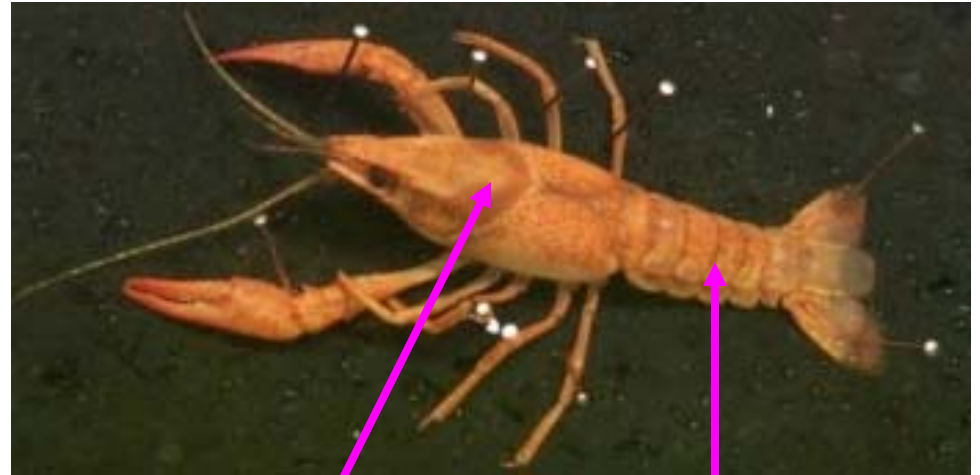
Chelicerata



Prosoma & Opisthosoma

Crustacea

Gills



Cephalothorax & Abdomen

**The line delineating the head from the thorax in the cephalothorax is the cervical groove.**